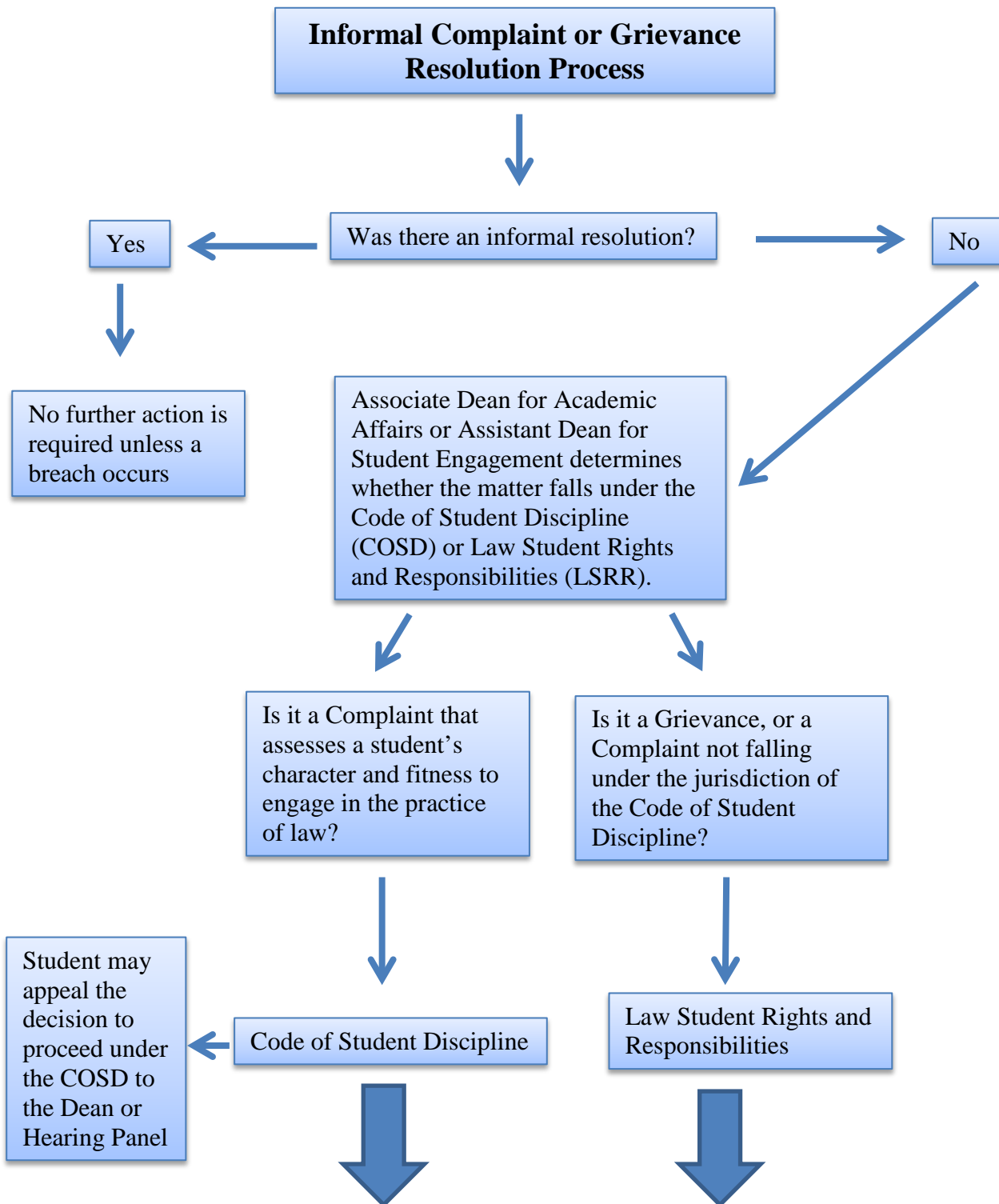
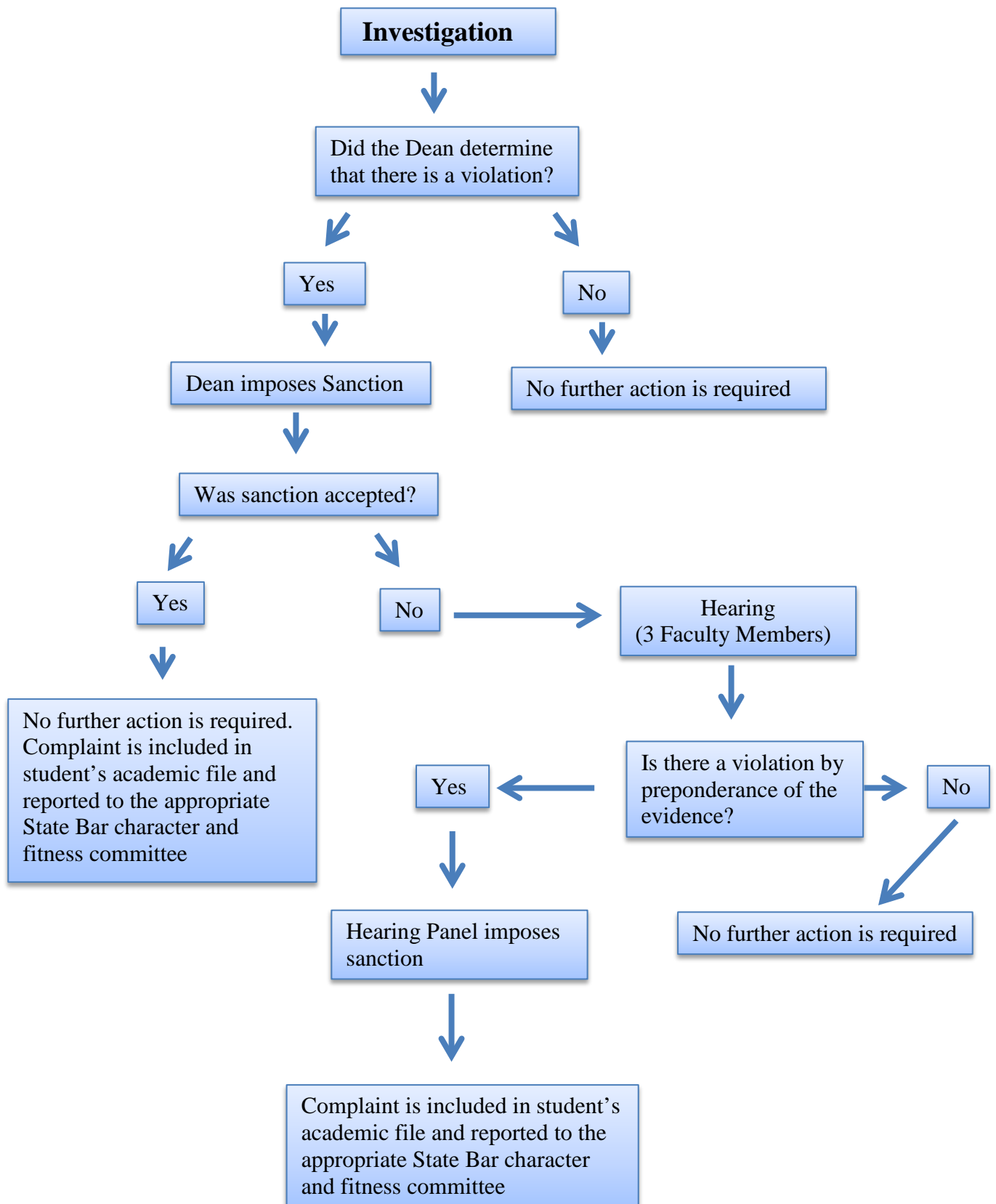


Overview of the MSU Law Complaint and Grievance Process¹

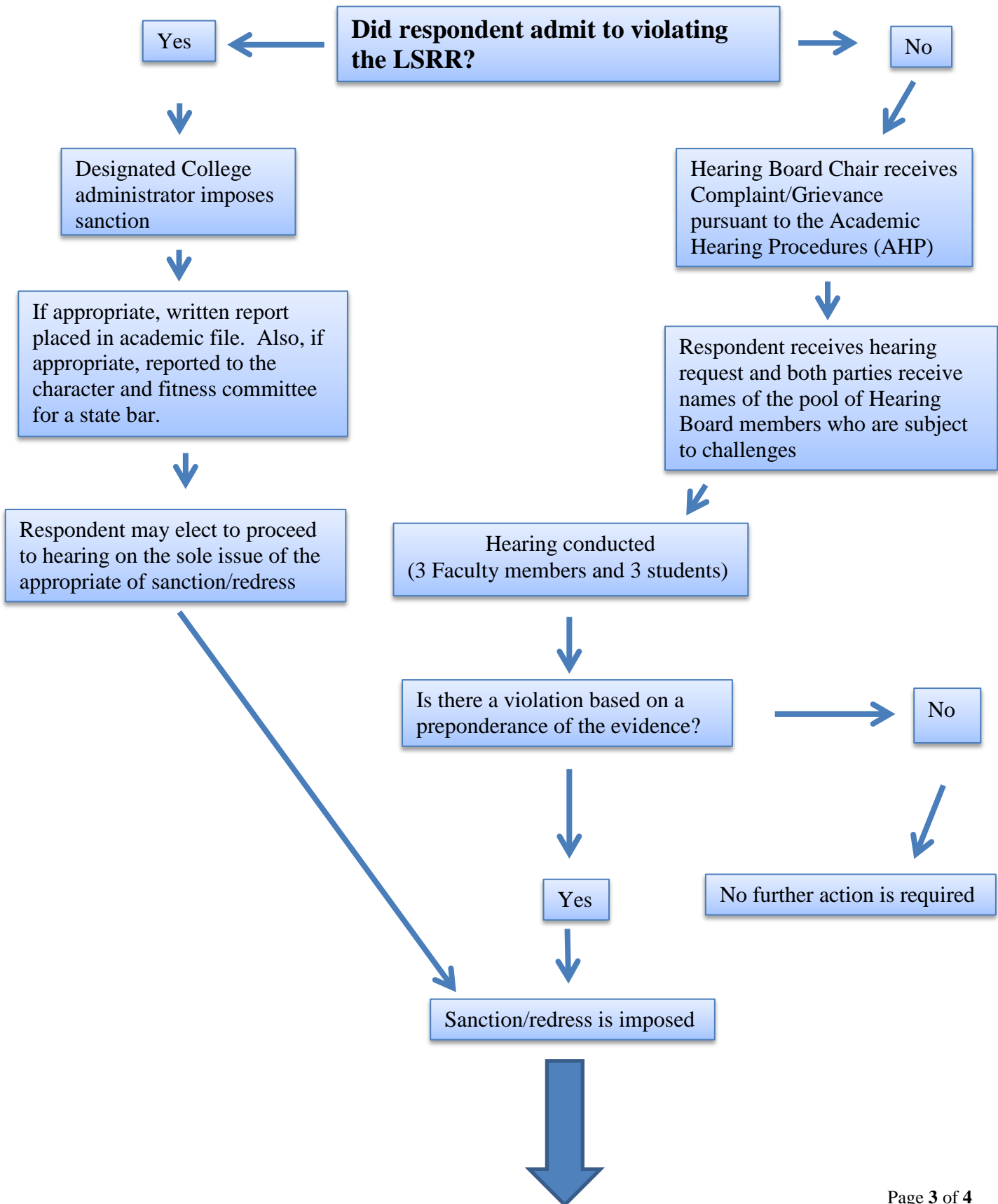


¹ A complaint is an allegation filed by a member of the College of Law community against a law student. A grievance is an allegation filed by a law student against a faculty, academic staff, or support staff member. Detailed policies and procedures regarding the process are found at <http://www.law.msu.edu/students/student-handbook.html>.

Code of Student Discipline



Law Student Rights and Responsibilities (LSRR)



Law Student Rights and Responsibilities (LSRR) Continued

